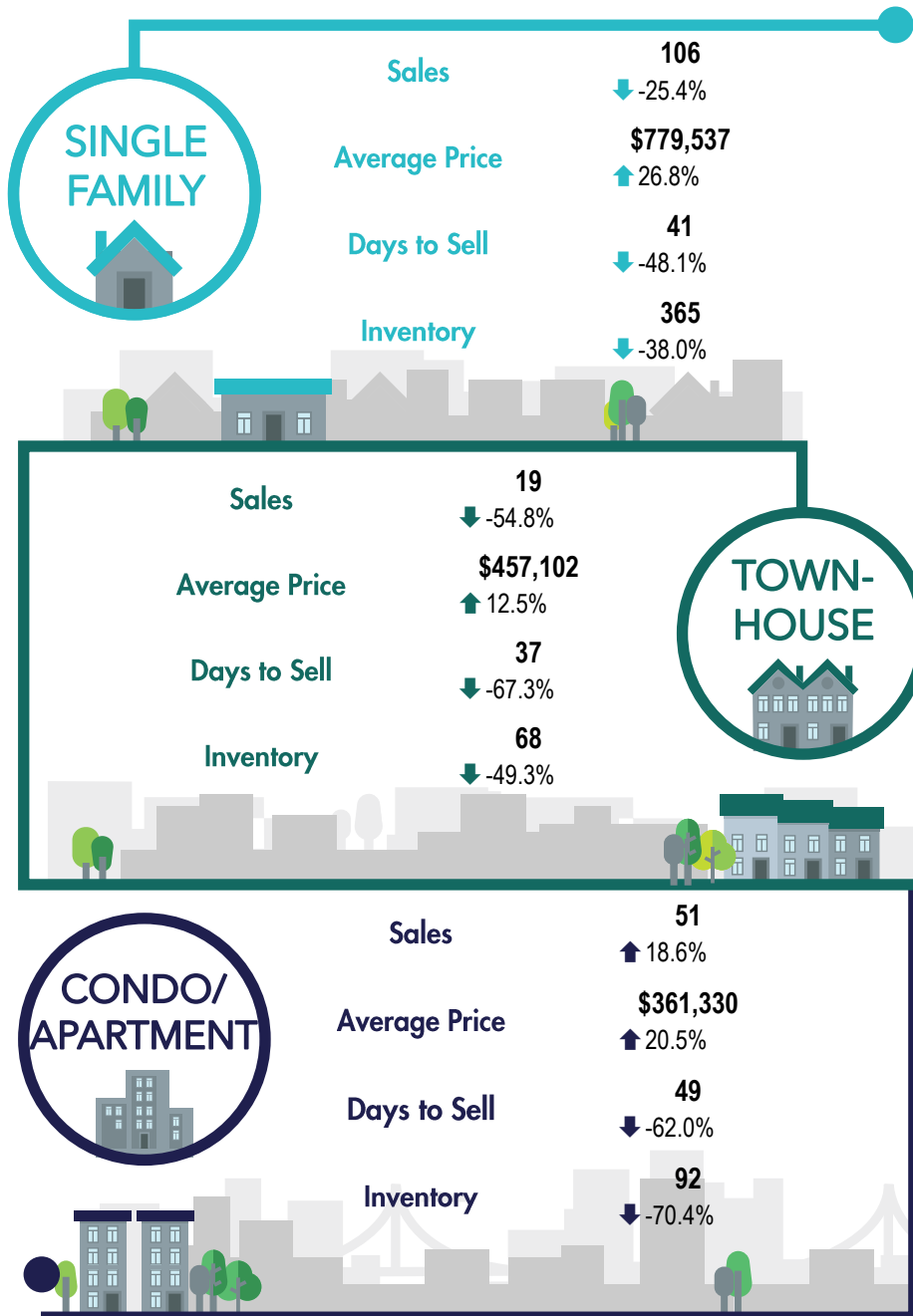


*The Benchmark Price is a better representation of value compared to the average or medium price, as it represents a dwelling with "typical attributes" to those traded in the area. Averages can be misleading due to atypical transactions.

**Percentage indicate change from the same period last year



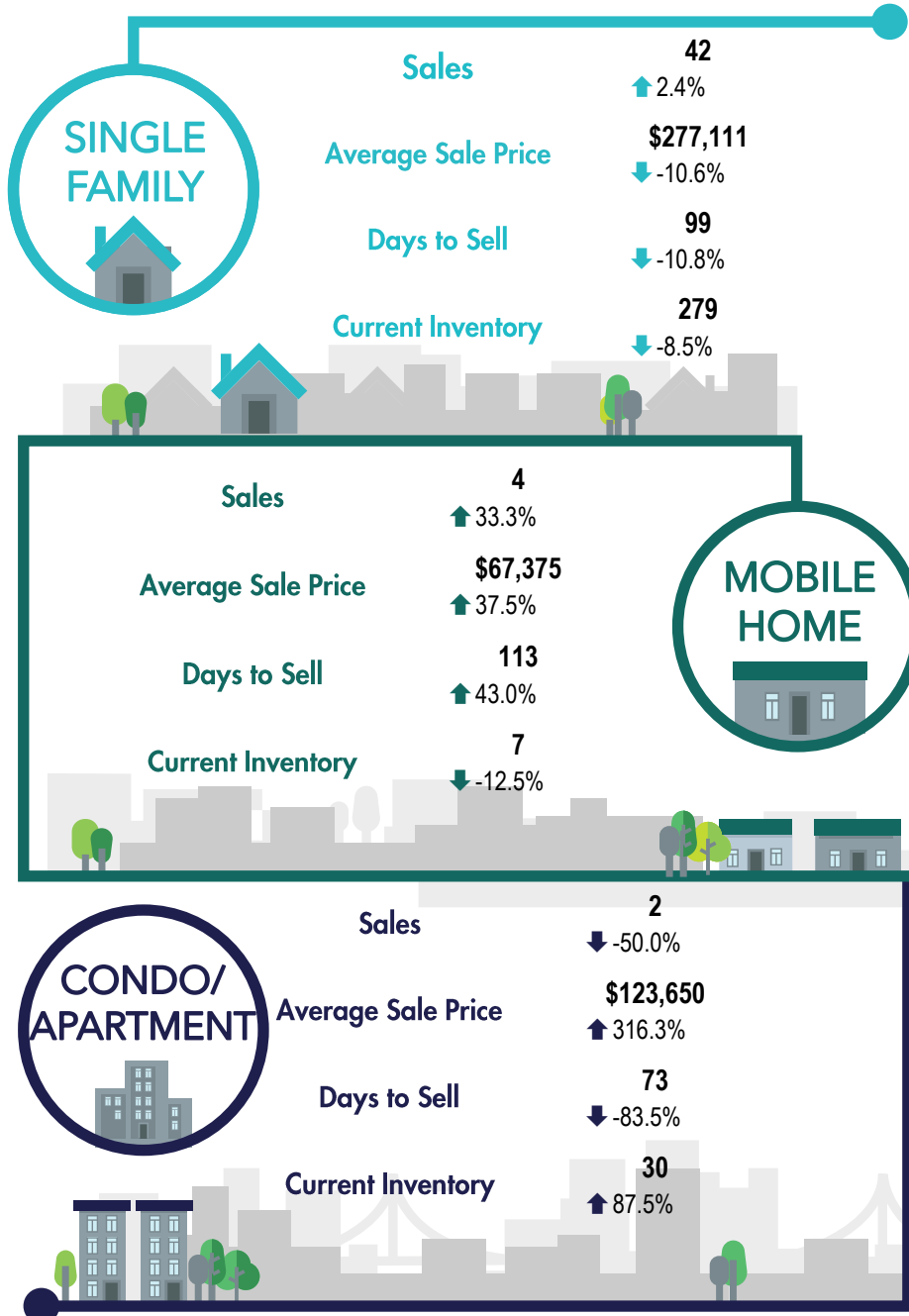
SOUTH OKANAGAN REGION



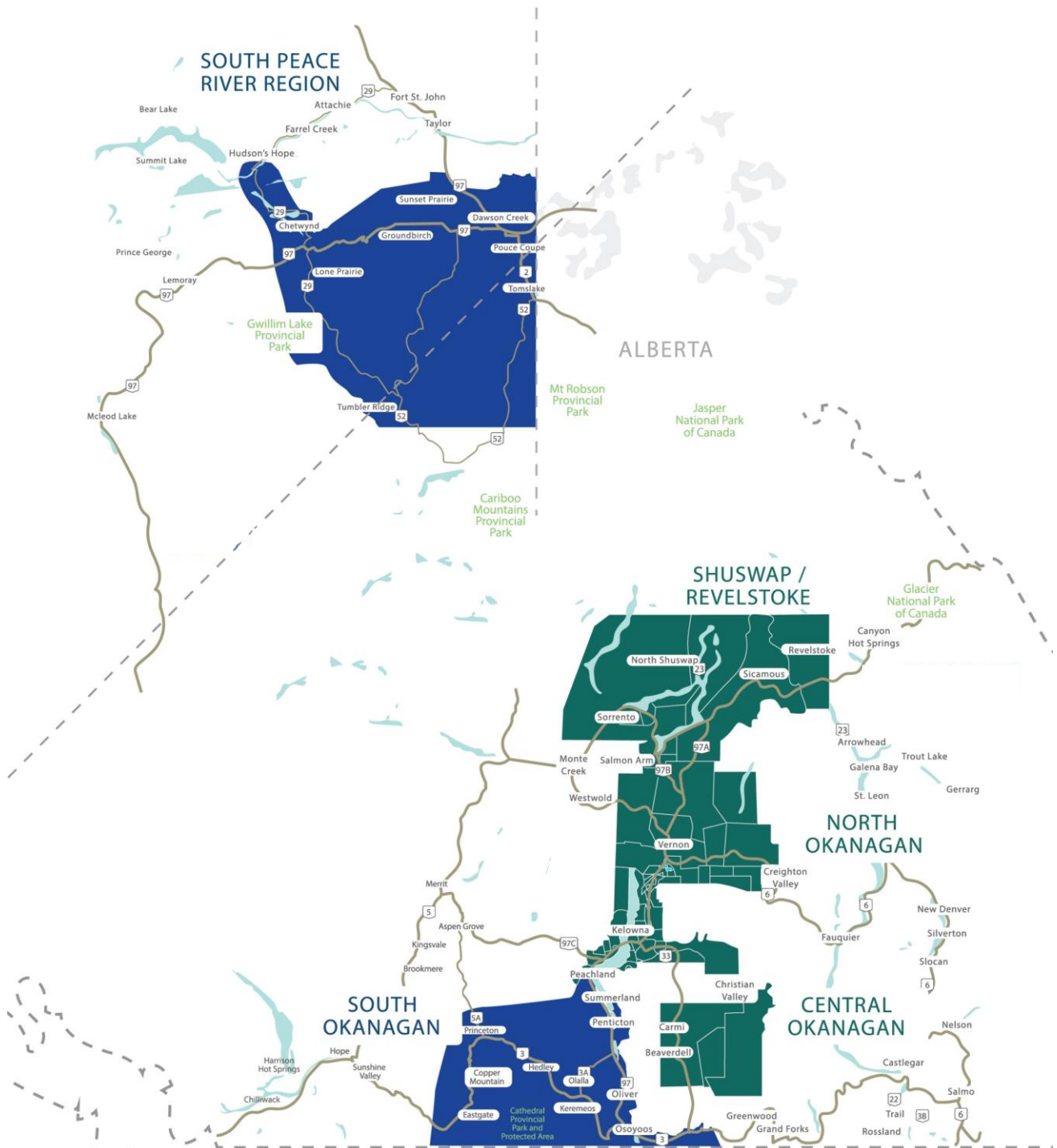
*Percentage indicate change from the same period last year



SOUTH PEACE RIVER REGION



*Percentage indicate change from the same period last year



This map is for informational purposes. It does not represent an on-the-ground survey and represents only the approximate relative location of property boundaries.



CENTRAL OKANAGAN

Location	SINGLE FAMILY		TOWNHOUSE		APARTMENT	
	Sales	Benchmark Price	Sales	Benchmark Price	Sales	Benchmark Price
Big White	1 0.0%		0 ↓ -100.0%	\$672,300 ↑ 27.6%	5 ↓ -28.6%	\$419,300 ↑ 28.0%
Black Mountain	11 ↓ -8.3%	\$1,093,000 ↑ 30.5%	3 0.0%	\$788,700 ↑ 25.3%	0	
Crawford Estates	0 ↓ -100.0%	\$1,222,000 ↑ 34.7%	0		0	
Dilworth Mountain	8 ↑ 60.0%	\$1,131,000 ↑ 30.5%	0 ↓ -100.0%	\$822,000 ↑ 24.3%	2 0.0%	\$460,500 ↑ 19.2%
Ellison	3 ↓ -25.0%	\$827,500 ↑ 32.4%	0 ↓ -100.0%	\$676,800 ↑ 24.2%	0	
Fintry	5 ↓ -54.5%	\$713,800 ↑ 31.8%	0	\$516,600 ↑ 26.0%	0	\$192,500 ↑ 0.0%
Glenmore	12 ↓ -36.8%	\$867,300 ↑ 30.4%	6 ↓ -40.0%	\$655,200 ↑ 32.8%	2 ↓ -75.0%	\$441,900 ↑ 20.0%
Glenrosa	8 ↓ -33.3%	\$667,900 ↑ 32.9%	0	\$611,900 ↑ 28.7%	0	
Joe Rich	1 ↓ -50.0%	\$2,113,000 ↑ 42.0%	0		0	
Kelowna North	6 ↓ -25.0%	\$722,400 ↑ 31.6%	9 ↑ 350.0%	\$722,100 ↑ 24.3%	37 ↑ 48.0%	\$528,600 ↑ 19.8%
Kelowna South	15 ↑ 87.5%	\$799,200 ↑ 30.4%	6 ↓ -25.0%	\$650,600 ↑ 31.0%	20 ↑ 17.6%	\$441,900 ↑ 24.4%
Kettle Valley	4 ↓ -63.6%	\$1,185,000 ↑ 32.4%	0	\$687,000 ↑ 26.7%	0	
Lake Country East / Oyama	9 ↑ 28.6%	\$1,015,000 ↑ 30.5%	2 0.0%	\$668,400 ↑ 27.2%	4 ↑ 300.0%	\$432,200 ↑ 20.4%
Lake Country North West	7 ↓ -30.0%	\$1,244,000 ↑ 33.7%	3 ↓ -57.1%	\$805,700 ↑ 24.2%	3 ↓ -25.0%	
Lake Country South West	7 ↓ -36.4%	\$904,700 ↑ 31.7%	1 0.0%	\$838,800 ↑ 24.7%	0	
Lakeview Heights	19 ↓ -26.9%	\$1,092,000 ↑ 31.6%	5 ↑ 25.0%	\$731,100 ↑ 31.5%	2 ↓ -50.0%	\$624,000 ↑ 18.2%
Lower Mission	8 ↓ -61.9%	\$1,037,000 ↑ 30.1%	9 ↓ -10.0%	\$751,600 ↑ 25.1%	25 ↑ 38.9%	\$443,200 ↑ 21.0%

* Percentage represents change compared to the same month last year



CENTRAL OKANAGAN

Location	SINGLE FAMILY		TOWNHOUSE		APARTMENT	
	Sales	Benchmark Price	Sales	Benchmark Price	Sales	Benchmark Price
McKinley Landing	3 ↓ -50.0%	\$1,097,000 ↑ 30.3%	2		0 ↓ -100.0%	
North Glenmore	1 ↓ -92.3%	\$922,500 ↑ 32.0%	4 ↓ -63.6%	\$614,700 ↑ 26.5%	11 ↑ 266.7%	\$394,000 ↑ 20.6%
Peachland	10 ↓ -23.1%	\$813,500 ↑ 32.0%	8 ↑ 60.0%	\$607,300 ↑ 31.2%	0	\$667,200 ↑ 18.5%
Rutland North	14 ↑ 55.6%	\$820,000 ↑ 31.3%	8 ↓ -20.0%	\$510,000 ↑ 31.2%	16 ↓ -5.9%	\$363,200 ↑ 22.2%
Rutland South	11 ↓ -26.7%	\$806,100 ↑ 31.3%	7 ↑ 75.0%	\$475,300 ↑ 26.0%	9 ↑ 125.0%	\$364,100 ↑ 19.9%
Shannon Lake	9 ↓ -43.8%	\$921,100 ↑ 32.1%	3 ↓ -66.7%	\$728,900 ↑ 29.1%	5 0.0%	\$462,700 ↑ 21.1%
Smith Creek	6 ↑ 200.0%	\$934,000 ↑ 31.8%	0	\$644,100 ↑ 28.3%	0	
South East Kelowna	1 ↓ -88.9%	\$1,055,000 ↑ 32.0%	0	\$966,500 ↑ 25.4%	0	
Springfield/Spall	4 ↓ -50.0%	\$830,000 ↑ 33.4%	8 ↓ -27.3%	\$583,000 ↑ 25.7%	14 ↑ 27.3%	\$489,800 ↑ 18.7%
University District	4 ↑ 100.0%	\$1,096,000 ↑ 29.3%	2	\$790,800 ↑ 25.1%	9 ↑ 28.6%	\$424,200 ↑ 19.3%
Upper Mission	18 ↑ 5.9%	\$1,160,000 ↑ 31.5%	0	\$1,024,000 ↑ 26.4%	0	
West Kelowna Estates	6 ↓ -75.0%	\$977,200 ↑ 31.5%	5 ↑ 150.0%	\$683,900 ↑ 27.2%	0	
Westbank Centre	18 ↑ 5.9%	\$696,400 ↑ 32.3%	6 ↓ -25.0%	\$564,800 ↑ 29.6%	13 ↑ 8.3%	\$411,800 ↑ 20.7%
Wilden	4 ↓ -50.0%	\$1,190,000 ↑ 32.2%	2 ↑ 100.0%	\$906,600 ↑ 26.9%	0	\$315,200 ↑ 21.0%

* Percentage represents change compared to the same month last year



NORTH OKANAGAN

SINGLE FAMILY

TOWNHOUSE

APARTMENT

Location	Sales	Benchmark Price	Sales	Benchmark Price	Sales	Benchmark Price
Adventure Bay	0 ↓ -100.0%	\$940,500 ↑ 31.4%	0 ↓ -100.0%	\$797,200 ↑ 19.1%	0	
Alexis Park	1 ↓ -66.7%	\$568,500 ↑ 32.8%	3 ↓ -40.0%	\$225,500 ↑ 22.6%	5 ↑ 150.0%	\$318,900 ↑ 21.9%
Armstrong	12 ↓ -29.4%	\$607,500 ↑ 32.0%	2 0.0%	\$492,500 ↑ 22.9%	1 0.0%	\$204,800 ↑ 26.6%
Bella Vista	5 ↑ 66.7%	\$774,400 ↑ 30.8%	1 ↓ -83.3%	\$528,600 ↑ 23.7%	0	
Cherryville	1 ↑ 30.5%	\$437,200 ↑ 30.5%	0 ↑ 28.7%	\$373,900 ↑ 28.7%	0	
City of Vernon	2 ↓ -71.4%	\$492,800 ↑ 33.4%	7 ↑ 16.7%	\$425,400 ↑ 24.4%	10 ↑ 66.7%	\$284,300 ↑ 22.2%
Coldstream	7 ↓ -63.2%	\$858,600 ↑ 30.8%	0 ↓ -100.0%	\$590,000 ↑ 25.1%	0	
East Hill	15 ↓ -11.8%	\$665,400 ↑ 33.0%	3 0.0%	\$505,700 ↑ 25.7%	0	
Enderby / Grindrod	7 ↓ -36.4%	\$527,200 ↑ 31.2%	1 ↓ -50.0%	\$374,400 ↑ 24.5%	0 ↑ 22.6%	\$239,100 ↑ 22.6%
Foothills	0 ↓ -100.0%	\$1,078,000 ↑ 30.5%	0 ↑ 22.7%	\$684,700 ↑ 22.7%	0	
Harwood	5 ↑ 400.0%	\$491,300 ↑ 31.6%	4 ↓ -20.0%	\$374,400 ↑ 24.4%	0	
Lavington	1 ↓ -80.0%	\$746,500 ↑ 30.4%	0		0	
Lumby Valley	2 ↓ -77.8%	\$531,100 ↑ 34.8%	0 ↑ 18.3%	\$382,100 ↑ 18.3%	0 ↓ -100.0%	
Middleton Mtn Coldstream	3 ↓ -57.1%	\$1,028,000 ↑ 31.6%	1		0	
Middleton Mtn Vernon	3 ↓ -57.1%	\$874,800 ↑ 31.8%	2 ↓ -33.3%	\$568,400 ↑ 23.8%	1	
Mission Hill	1 ↓ -83.3%	\$576,300 ↑ 33.2%	0 ↓ -100.0%	\$396,000 ↑ 29.5%	0 ↓ -100.0%	\$224,200 ↑ 22.7%
North BX	3 ↓ -40.0%	\$765,200 ↑ 32.3%	0 ↑ 27.5%	\$466,800 ↑ 27.5%	0	

* Percentage represents change compared to the same month last year



NORTH OKANAGAN

Location	SINGLE FAMILY		TOWNHOUSE		APARTMENT	
	Sales	Benchmark Price	Sales	Benchmark Price	Sales	Benchmark Price
Okanagan Landing	2 0.0%	\$716,400 ↑ 33.3%	4 ↓ -50.0%	\$594,000 ↑ 23.5%	1 ↓ -75.0%	\$519,600 ↑ 20.1%
Okanagan North	4 ↑ 100.0%	\$483,900 ↑ 27.0%	0		0	
Predator Ridge	3 ↓ -57.1%	\$993,600 ↑ 32.1%	2 ↑ 100.0%	\$825,500 ↑ 26.0%	0 ↓ -100.0%	
Salmon Valley	1 ↓ -50.0%	\$537,700 ↑ 29.6%	0		0	
Silver Star	1 ↓ -50.0%	\$937,200 ↑ 36.0%	0 ↓ -100.0%	\$454,900 ↑ 16.6%	3 ↑ 200.0%	\$313,900 ↑ 25.3%
South Vernon	3 ↑ 31.7%	\$748,400	0		0	
Swan Lake West	4 ↑ 33.3%	\$535,500 ↑ 33.9%	0		0	
Westmount	1 0.0%	\$601,000 ↑ 30.4%	1 ↑ 25.0%	\$394,700	0	

* Percentage represents change compared to the same month last year



SHUSWAP/REVELSTOKE

Location	SINGLE FAMILY		TOWNHOUSE		APARTMENT	
	Sales	Benchmark Price	Sales	Benchmark Price	Sales	Benchmark Price
Blind Bay	16 ↑ 60.0%	\$684,700 ↑ 33.1%	0 ↓ -100.0%	\$554,800 ↑ 17.6%	0	
Eagle Bay	1 ↓ -75.0%	\$630,200 ↑ 31.4%	0		0	
NE Salmon Arm	10 ↓ -52.4%	\$615,800 ↑ 33.9%	2 ↓ -33.3%	\$446,900 ↑ 24.3%	0	\$361,200 ↑ 21.2%
North Shuswap	4 ↓ -60.0%	\$472,000 ↑ 27.8%	1 ↓ -66.7%	\$503,400 ↑ 22.6%	0 ↓ -100.0%	
NW Salmon Arm	0 ↓ -100.0%	\$735,000 ↑ 33.1%	1 0.0%	\$470,300 ↑ 24.9%	0	\$287,500 ↑ 20.4%
Revelstoke	4 0.0%	\$675,300 ↑ 35.3%	0 ↓ -100.0%	\$476,300 ↑ 25.8%	1 ↓ -66.7%	\$383,900 ↑ 20.6%
SE Salmon Arm	10 0.0%	\$667,700 ↑ 33.8%	3 ↑ 200.0%	\$453,700 ↑ 31.5%	3 ↑ 200.0%	
Sicamous	8 ↑ 100.0%	\$466,700 ↑ 33.7%	2 ↑ 100.0%	\$464,200 ↑ 24.7%	7 ↑ 133.3%	\$396,300 ↑ 22.1%
Sorrento	1 ↓ -80.0%	\$573,500 ↑ 42.2%	0 ↓ -100.0%	\$530,100 ↑ 23.7%	0	
SW Salmon Arm	1 ↓ -50.0%	\$610,600 ↑ 32.7%	2 ↑ 100.0%	\$474,800 ↑ 26.6%	2	
Tappen	0 ↓ -100.0%	\$621,900 ↑ 33.4%	0		0	

* Percentage represents change compared to the same month last year



SOUTH OKANAGAN

Location	Sales	Average Price	Sales	Average Price	Sales	Average Price
Kaleden / Okanagan Falls	16 ↑ 60.0%	\$684,700 ↑ 33.1%	0 ↓ -100.0%	\$554,800 ↑ 17.6%	0	
Keremeos	1 ↓ -75.0%	\$630,200 ↑ 31.4%	0		0	
Naramata	10 ↓ -52.4%	\$615,800 ↑ 33.9%	2 ↓ -33.3%	\$446,900 ↑ 24.3%	0 ↑ 21.2%	\$361,200
Oliver	4 ↓ -60.0%	\$472,000 ↑ 27.8%	1 ↓ -66.7%	\$503,400 ↑ 22.6%	0 ↓ -100.0%	
Osoyoos	0 ↓ -100.0%	\$735,000 ↑ 33.1%	1 0.0%	\$470,300 ↑ 24.9%	0 ↑ 20.4%	\$287,500
Penticton	4 0.0%	\$675,300 ↑ 35.3%	0 ↓ -100.0%	\$476,300 ↑ 25.8%	1 ↓ -66.7%	\$383,900 ↑ 20.6%
Apex Mountain (Hedley)	10 0.0%	\$667,700 ↑ 33.8%	3 ↑ 200.0%	\$453,700 ↑ 31.5%	3 ↑ 200.0%	
Princeton	8 ↑ 100.0%	\$466,700 ↑ 33.7%	2 ↑ 100.0%	\$464,200 ↑ 24.7%	7 ↑ 133.3%	\$396,300 ↑ 22.1%
Summerland	1 ↓ -80.0%	\$573,500 ↑ 42.2%	0 ↓ -100.0%	\$530,100 ↑ 23.7%	0	

* Percentage represents change compared to the same month last year



SOUTH PEACE RIVER REGION

Location	SINGLE FAMILY		MOBILE HOME		APARTMENT	
	Sales	Average Price	Sales	Average Sell Price	Sales	Average Price
Chetwynd	5	\$210,350	1	\$106,000	0	\$0
Dawson Creek	24 ↑ 50.0% ↓ -17.9%	\$285,954	3 0.0% ↑ 11.2%	\$54,500	1	\$199,800
Tumbler Ridge	4 ↓ -60.0% ↑ 21.9%	\$172,375	0	\$0	1 ↓ -75.0% ↑ 59.9%	\$47,500

* Percentage represents change compared to the same month last year